

Thief River Watershed Public Participation Strategy

February 2013

Prepared by RMB Environmental Laboratories, Inc.
for Red Lake Watershed District

Introduction

MN Pollution Control Agency's Watershed Approach

Introduction In 2007, the MPCA and its partners began implementing the watershed approach. This approach is a 10-year rotation for assessing waters of the state at the level of Minnesota's major watersheds. There are four major steps. The first three steps will be completed within the first four years of initiation of each watershed study. Targeted implementation of water quality activities, based on the results of the four-year study, will begin in year five.

1. Monitor and gather data and information
2. Assess the data
3. Establish implementation strategies to meet standards
4. Implement water quality activities, specific to final plans

Civic Engagement

What is it? Civic Engagement is inviting the public to participate in the co-learning and decision-making process. For watershed restoration and protection (WRAP) projects it means creating opportunities for the public to become aware the assessment is taking place. It also is allowing the public to review the water quality data alongside technical staff and giving them opportunities to provide feedback and insight. At the highest level of civic engagement, the public is empowered to make the final decisions about their water quality.



Thief River Watershed Civic Engagement Goals

1. Increase volunteer participation in natural resource monitoring
2. Increase the number of watershed residents participating in water quality discussions
3. Find effective ways to engage citizens in a meaningful way
4. Increase the resources utilized to communicate water quality activities within the watershed
5. Create a document with contact information for local resources, specific to certain water quality concerns or funding sources

Engaging Target Audiences

Defining Target Audiences

Process of Defining To assist with defining target audiences within the Thief River Watershed, the planning team utilized a socioeconomic report, completed by the MPCA. A summary of this information was presented to the Marshall County Water Resource Advisory Committee. Input from other local Soil and Water Conservation District (SWCD) and County Water Plan staff was also gathered.

The population in the Thief River Watershed is mostly rural with several smaller municipalities spread out across the watershed. They are Thief River Falls, Holt, Goodridge, Grygla, and Fourtown. In addition, the water quality impairments on the rivers are spread out through the watershed and not concentrated in one area.

Identification of Target Audiences

Who are they? The planning team defined the target audiences as:

- Interested landowners in the following townships:
 - Thief Lake
 - Whiteford
 - Cedar
 - East Valley
 - Mud Lake
 - Eckvoll
 - Valley
 - Holt
 - Benville
 - Lee
 - Espelie
 - Molyan
 - Grand Plain
 - Adger
 - Excel



An official TMDL notification protocol is available as well, to help identify all the agencies, businesses, companies, special interest groups, and other entities that the outcome of this assessment will impact.

In addition to the targeted approach to reach the defined target audiences, the general public will be encouraged to participate.

Increasing Level of Public Impact

Spectrum of Public Participation

Engaging Citizens

Not all public participation programs are the same. It is important to consider the overall goal of the program. For example, while some programs may simply be looking to educate the public about a program or event, other projects may want the citizens to make the final decisions.

The International Association for Public Participation’s Spectrum of Public Participation concept presents a clear and concise way of thinking about the level of involvement we are planning for.

For the Thief River WRAP project we have opportunities to involve the public through all levels of participation. However, the level of empowerment would seem to fit best in the last six years of the MPCA’s Watershed Approach, which addresses management of these water resources. The management plan will be a collaborative product of the local community and technical resources with the individualized needs and concerns being addressed. This will hopefully lead to a higher rate of participation in the actions that will improve or sustain water quality.

IAP2 Spectrum of Public Participation



Opportunities for Public Participation in the Thief River Watershed

INFORM	
Participation Goal: To provide the public with balanced and objective information to assist them in understanding the problem, alternatives, opportunities and/or solutions.	
Mailings to individual landowners	Contact information is available through the county offices
Red Lake Watershed District’s (RLWD) website	www.redlakewatershed.org
Informational brochure and display	Available at the RLWD’s office
Press releases and advertisements with local media contacts	See page 5 for contact information

INFORM (Continued)	
SWCD newsletters	Contact the local SWCD offices to get information about including announcements in their newsletters
Organize events along the river to bring attention to the resource	4-H Clubs and/or River Watch teams may be interested in helping out
Presentations for local civic groups	See Appendix B for contact information
CONSULT	
Participation Goal: To obtain public feedback on analysis, alternatives and/or decisions.	
Public meetings	Some facility options include the RLWD conference room, the Imperial Room at the Ralph in Thief River Falls, and the community center in Grygla.
Thief River blog	www.thiefriver.posterous.com
Comment period on final reports	Before the final reports are finalized, the public will have the opportunity to comment on them
Open houses	Invite the public to stop by during a set period of time to discuss concerns and ideas with the technical team
INVOLVE	
Participation Goal: To work directly with the public throughout the process to ensure that public concerns and aspirations are consistently understood and considered.	
World Cafe discussions	Small group facilitated discussions that allow interested citizens to share their individual perspectives and insight
Map party	Open house format displaying the different maps used by technical resources managing the Thief River Watershed
COLLABORATE	
Participation Goal: To partner with the public in each aspect of the decision including the development of alternatives and the identification of the preferred solution.	
Citizen Advisory Committee	A committee made up of interested local citizens that would participate in discussions with the technical team as the computer modeling progresses and final reports are being written
EMPOWER	
Participation Goal: To place final decision-making in the hands of the public.	
Policy considerations at the local level	Local policy actions reflect the concerns and priorities laid out in the final WRAP plan
Implementation of best management practices	If the solutions in the WRAP plan are developed with input from the local land managers, the likelihood of implementation may increase. In addition, implementation activities will be streamlined due to the collaboration between landowners, local agencies that can distribute funding, and funding sources.

Media Contacts

Utilizing the local media outlets

Informing the Public

Local media outlets are an efficient way of getting information to all citizens who live and/or work within the Thief River Watershed. Press releases can be submitted through email. The information in this releases can be utilized by the media contact for an immediate announcement or used to support an article after an event has occurred. Most media outlets have a printed or online community calendar that specific events can be added to.

Based on conversations with individuals who live or work in this watershed, the best way to notify all landowners is to send letters in the mail or call them on the phone. KTRF Radio is a popular station in the area.

MEDIA OUTLETS		
Media Contact	Contact Information	Comments/Suggestions
Thief River Falls Times & Northern Watch	trftimes@mncable.net nwatch@nwatch.com (218)681-4450	Very willing to publish news related to this project Quote for 4" x 3" advertisement in the Watch was \$54 (Summer 2012)
Grygla Eagle	grygla.eagle@gmail.com (218)294-6220	Quote for 4" x 3" advertisement in the Eagle was \$21 (Summer 2012)
Middle River Honker	honkernews@wikel.com	Area newspaper published on Saturdays
TRFRadio (KKDQ FM 99.3, KTRF AM 1230, KKAQ AM 1460)	www.trfradio.com (218)681-4900 (general) (612)208-2756 (to advertise)	Publishes the radiogram flyer daily that is available in local restaurants
Northland College Pioneer 90.1 Radio	www.radionorthland.org (218) 683-8588 ext 3	Local community and technical college radio station
Sjoberg Cable Channel 13	TRF - call the Chamber of Commerce at 218-681-3720	Public announcements are aired on channel 13
MinnPost Newspaper	www.minnpost.com	MinnPost is a local nonprofit news organization
Marshall County SWCD Newsletter	www.nwmnswcd.org (218)745-5010	Contact the office to discuss including an article
Pennington County SWCD Newsletter	www.nwmnswcd.org (218)683-7075	Contact the office to discuss including an article

Social Network

Existing Social Structure

Making Connections The Thief River Watershed social network map (page 7) displays the social structure made up of organizations and/or individuals. The connecting lines show where a relationship or partnership already exists.

By engaging and energizing this existing structure of communication the civic engagement effort will be more effective than a contact list and a hierarchial system where the “expert” presents the information and some how the information trickles down to everybody in the Thief River Watershed.

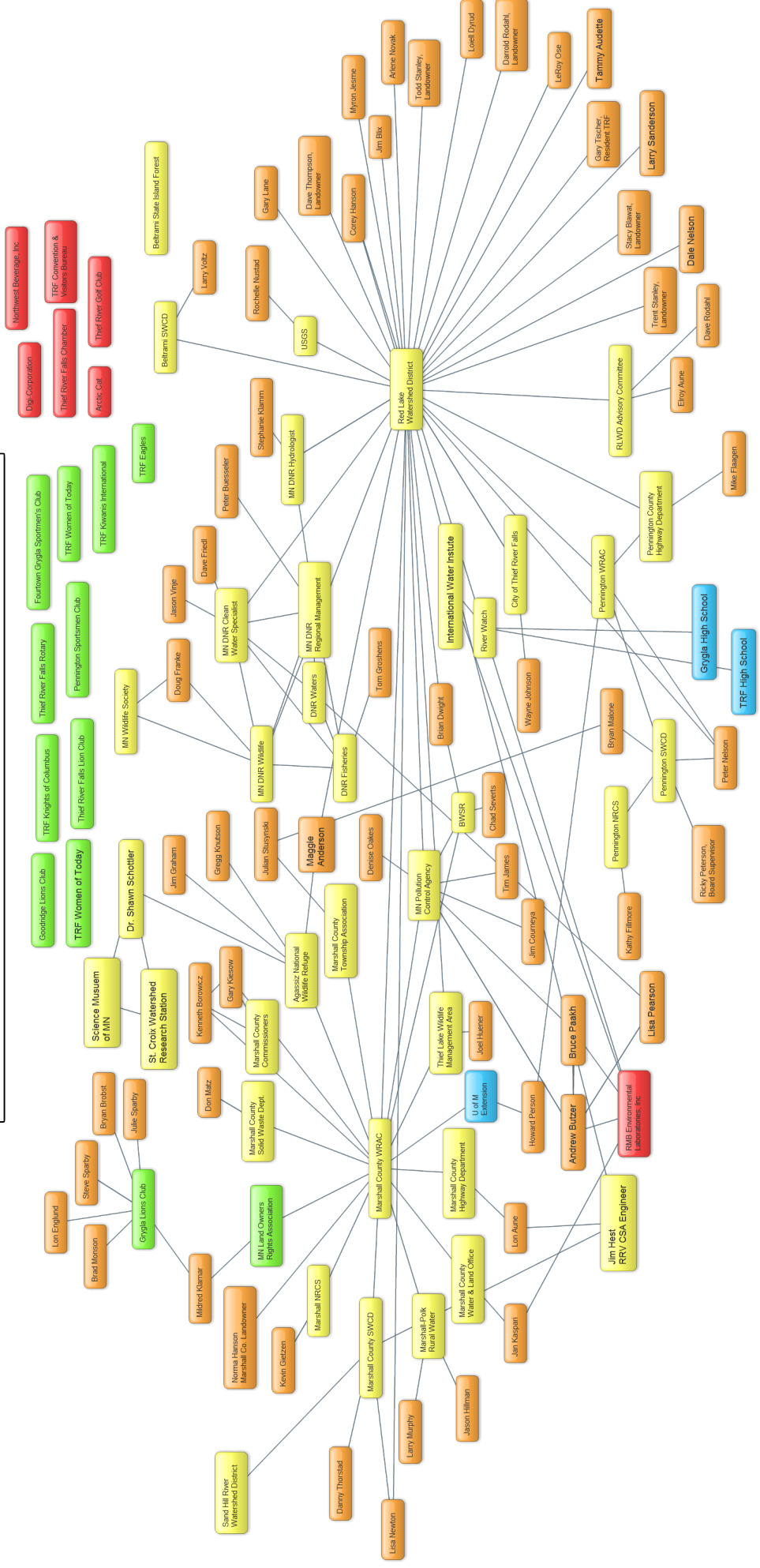
Utilizing the social network of this watershed will help the planning team discover and provide support for relationships through conversations that matter, which leads to a better understanding of the collective intelligence of the whole watershed, related to water quality in the Thief River.

Additional “nodes” and “connections” can surely be added. This image is a starting point, and could be improved upon through additional network weaving activities.



Effective Networks:

- improve information flow,
- increase communication and awareness of relationships,
- open new resources,
- expand and support leadership,
- encourage collaboration, innovation, and learning for breakthroughs,
- increase inclusion and bridge divides,
- result in better outcomes, and
- facilitate scale and impact.



Thief River Watershed Social Network Map
 A detailed image of this map is available by contacting
 the Red Lake Watershed District
 (www.redlakewatershed.org/contacts.html) or on the
 project blog (www.thiefriver.wordpress.com)

Final Thoughts

Public Participation

Engaging Citizens

This public participation plan is intended to be a short and concise guide for creating opportunities for the public to become engaged in the Thief River WRAP process. The involvement of agencies and other entities involved with water management is also crucial to the success of this assessment.

Agencies and organizations are included in the social network and their contact information is included in Appendix B. The majority of announcements about activities and special events will be sent to agencies and organizations through email communication.

Appendices

Contact Lists

Appendix A: Stakeholder contacts as of May 2013

Appendix B: Additional contacts

Appendix A

Name	Association/Title	Address	Phone	E-mail
Adrian, Ron	Houston Engineering			
Anderson, Maggie	Retired Refuge Manager, Agassiz National Wildlife Refuge	1823 Robin hood Dr Thief River Falls, MN 56701	218-449-4115 x202 218-688-0046	Margaret_Anderson@fws.gov petrel@mncable.net
Aune, Elroy	RLWD Advisory Committee	30077 440th St NE MN 56724 Gatzke, 447 S. Main St.	218-459-3378	djaune@gvtel.com
Aune, Lon	Marshall County Highway Dept.	Warren, MN 56762	(218) 745-4381	Lon.Aune@co.marshall.mn.us
Barron, Donald	Clearwater Rice/Pennington Co./Retired Soil Scientist	103 Marley Ave. S. Thief River Falls 56701	(218) 681-3684	gbarron@mncable.net
Berg, Brad	Landowner	38039 240th Ave Middle River, MN 56737	218-222-3439	
Berg, Jerome	Landowner	25710 390th St Middle River, MN 56737	218-222-3593	
Blawat, Stacy	Landowner	17750 274th St NE River Falls, MN 56701	218-449-3635	roydc@wiktel.com
Blix, Jim	RLWD			
Buesseler, Peter	MN DNR	2115 Birchmont Beach Rd Bemidji, MN	218-308-2626	peter.buesseler@state.mn.us
Christensen, Curtis		19358 160th St. N.E. Thief River Falls, MN 56701	218-681-1643	
City of Grygla		Grygla Civic Building 219 West Beltrami St P.O. Box 76 Grygla, MN 56727	218-294-6292	cityofgrygla@gvtel.com
Clack, Justin				clackfam5@hotmail.com
Coe, Lee	Red Lake Watershed District Board of Managers - Beltrami County	3948 Nebish Road NE Tenstrike, MN 56683	218-243-2597 (home), 218-556-8061	leecoe@paulbunyan.net
Courneya, Jim	MPCA Watershed Unit Supervisor	714 Lake Ave Ste 220 Detroit Lakes 56501	218-846-8105	Jim.Courneya@pca.state.mn.us
Cullen, Elvera		1215 Edgewood Dr Thief River Falls, MN 56701	218-681-3136	ecullen@mncable.net
Drangstveit, Mike	Landowner	22919 300th Ave NE Goodridge, MN	218-378-4618	
Drees, Nick	Middle Snake Tamarac Rivers WD		218-745-4741	mrsrwd@wiktel.com
Dwight, Brian	Board Conservationist, Minnesota Board of Water and Soil Resources	701 Minnesota Avenue, Suite 234 Bemidji, MN 56601	(218) 333-8027	brian.dwight@bwsr.state.mn.us
Dyrud, Lars		23205 160th Ave NE Thief River Falls, MN 5701		
Dyrud, Loiell	Citizen	23484 150th Ave NE Thief River Falls, MN 56701	218-681-6964	lod@wiktel.com
Engelstad, Richard	ARLWD Advisory Committee	Gatzke		
Fillmore, Kathy	Pennington NRCS	201 Sherwood Dr. S River Falls, MN 56701	218-681-1612	kathy.fillmore@nrns.usda.gov
Flaagan, Mike	Pennington County Hwy	250 125th Ave NE River Falls, Mn 56701	218-683-7017	
Franke, Doug	DNR	MN Department of Natural Resources 246 125th Ave NE Thief River Falls, MN 56701	218-681-0946	douglas.franke@state.mn.us
Friedl, David	Clean Water Legacy Specialist, Minnesota Department of Natural Resources	1509 1st Ave N Fergus Falls, MN 56537	218.739.7576 x264	david.friedl@dnr.state.mn.us
Froschheiser, Ken & Joyce			218-681-8416	
Galloway, Joel	USGS	821 E. Interstate Ave. Bismarck, ND 58503	701-250-7402	jgallowa@usgs.gov
Gietzen, Kevin	NRCS	PO Box 74 MN 56762 Warren,	218-745-4351	kgietzen@mn.nrcs.gov
Graham, Jim	Interim Refuge Manager, Agassiz National Wildlife Refuge	Agassiz NWR 22996 290th St. NE	218-449-4115 x202	James_Graham@fws.gov
Groshens, Tom	DNR Fisheries - Bemidji Red River Fisheries Specialist	6603 Bemidji Ave. N. Bemidji, MN 56601	(218) 308-2365	tom.groshens@dnr.state.mn.us
Grygla Eagle Newspaper				grygla.eagle@gmail.com ;
Haig, Dan				daniel.haig@mn.usda.gov

Appendix A

Name	Association/Title	Address	Phone	E-mail
Hagen, Larry	RLWD Advisory Committee	Gatzke		
Hahn, Edwin Dale			218-686-3970	councilman.hahn@gmail.com
Halvorson, Danni	International Water Institute			danni@iwinst.org
Hanson, Corey	Red Lake Watershed District, Water Quality Coordinator	1000 Pennington Ave S. Thief River Falls	(218) 681-5800; cell 218-686-9691	coreyh@wiktel.com
Hanson, Norma	Citizen	21625 330th Ave NE Goodridge, MN 56725	218-378-4380	
Hill, David	TRF Times	PO Box 100 River Falls, MN 56701	Thief 218-681-4450	dhill@trftimes.com
Hoffert, Ann		102 Westwood Ct. Thief River Falls, MN 56701	218-681-1605	
Hoffman, Jerry			218-686-0224	
Huener, Joel	DNR - Thief Lake WMA	42280 240th Ave NE Middle River, MN 56737	218-222-3747	joel.huener@state.mn.us
Jacobson, Cassie	Pennington SWCD			cassandra.jacobson@mn.nacdnet.net
James, Tim	MPCA	714 Lake Ave Ste 220 Detroit Lakes 56501	218-846-8103	tim.james@state.mn.us
Jesme, Myron	Red Lake Watershed District, Administrator	1000 Pennington Ave S. Thief River Falls	(218) 681-5800; cell 218-686-9694	jesme@wiktel.com
Johnson, Wayne	City of Thief River Falls		218-681-3809	wjohnson@citytrf.net
Johnson, Stephanie	Houston Engineering		763-493-4522	sjohnson@houstoneng.com
Kajewski, Glen	NRCS	Natural Resources Conservation District 2038 Hwy 1 NE Thief River Falls, MN 56701	218-681-6600 x101	glen.kajewski@mn.usda.gov
Kaspari, Jan	Marshall County Water Planner/Zoning Administrator	Marshall County Water and Land Office 208 E. Colvin Avenue, Suite 3 Warren, MN 56762	218-745-4217	jan.kaspari@co.marshall.mn.us
Kaushagen, Luke and Larae		15865 200 St. NE Thief River Falls, MN 56701	218-681-5724	
Kiesow, Gary	Marshall County Commissioner	25430 340th Ave. NE Goodridge, MN 56725	(218) 378-4480	garjul@gvtel.com
Klamar, Mildred	Minnesota Land Owners Rights Association	32308 340th St. NE Gatzke, MN 56724	218-459-3436	
Klamm, Steph	DNR Hydrologist			Stephanie.Klamm@state.mn.us
Klimek, Karsten	MPCA Biomonitoring Program	MPCA Brainerd Office 7678 College Road, Suite 105 Baxter, MN 56425		
Knutson, Gregg	Wildlife Biologist, United States Fish and Wildlife Service	Agassiz NWR 22996 290th St. NE Middle River, MN 56737-9754	218-449-4115, ext 204	Gregg_Knutson@fws.gov
Lane, Gary	Red Lake Watershed District	1000 Pennington Ave S. Thief River Falls	(218) 681-5800; cell 218-686-9694	gary@wiktel.com
MacGregor, Molly	MPCA - Detroit Lakes	714 Lake Ave Ste 220 Detroit Lakes 56501	218-846-0494 218-846-8107	Molly.Macgregor@state.mn.us
Malone, Bryan	Pennington SWCD	Pennington County SWCD 201 Sherwood Ave S Thief River Falls, MN 56701	218-683-7075	bryan.malone@mn.nacdnet.net
Mowry, Craig	Agassiz NWF		218-681-6403	Craig_Mowry@fws.gov
Nelson, Dale	Red Lake Watershed District Board of Managers - Pennington County	10367 140th Street NW Thief River Falls, MN 56701	(home), 218-681- 0032 (cell)	ddmmz@wiktel.com
Nelson, Peter	Pennington County SWCD		218-683-7075	peter.nelson@mn.nacdnet.net
Newton, Lisa	Marshall SWCD	PO Box 74 Warren, MN 56762	218-745-5010	lisa.newton@mn.nacdnet.net
Niemela, Scott	MPCA Biomonitoring Program	MPCA Brainerd Office 7678 College Road, Suite 105 Baxter, MN 56425	218-828-6076	scott.niemela@pca.state.mn.us
Nustad, Rochelle	USGS	102 N 4th St., Grand Forks, ND 56203	701-775-7221	ranustad@usgs.gov
Okland, Gerry	Citizen	23205 160th Ave NE Thief River Falls, MN 5701	218-681-4357	
Olin, Dave	District 01A State Representative	593 State Office Building 100 Rev. Dr. Martin Luther King Jr. Blvd. Saint Paul, MN 55155	651-296-9635	rep.dave.olin@house.mn
Ose, LeRoy	Red Lake Watershed District Board of Managers - Marshall County	15115 229th Street NE Thief River Falls, MN 56701	218-681-7796 218-689-6675	leroyose@wiktel.com
Paakh, Bruce	Minnesota Pollution Control Agency, Red River Basin Monitoring Coordinator	714 Lake Ave Ste 220 Detroit Lakes 56501	218-846-8115	bruce.paakh@state.mn.us

Appendix A

Name	Association/Title	Address	Phone	E-mail
Person, Howard	Extension Educator	Box 616 101 Main Ave N, Courthouse Thief River Falls MN 56701	218-683-7030	perso005@umn.edu
Peterson, Ricky	SWCD Supervisor	16642 State Hwy 1 NE	218-681-2895	raptrf@gmail.com
Philipp, Joe		22878 260th Ave NE Goodridge, MN 56725		jspfarm@wiktel.com
Poegel, Jessica	MPCA Biomonitoring Program	MPCA Brainerd Office 7678 College Road, Suite 105 Baxter, MN 56425	218-316-3915	jessica.poegel@pca.state.mn.us
Prachar, Randy	DNR - Thief Lake WMA	42280 240th Ave NE Middle River, MN 56737	218-222-3747	randy.prachar@dnr.state.mn.us
Robinson, Wade	Pennington County SWCD	Pennington County SWCD 201 Sherwood Ave S Thief River Falls, MN 56701	Pennington County SWCD	wade.robinson@mn.nacdnet.net
Rodahl, Darrold	Thief River Landowner	18646 270th St. NE Thief River Falls, MN 56701	218-681-7025	dkrodahl@wiktel.com
Rodahl, Dave	RLWD Advisory Committee	18093 230th St. NE Thief River Falls, MN 56701	218-681-2302	
Rude, Arlo	City of Thief River Falls	Box 528 Thief River Falls, MN 56701	218-681-5816	arude@citytrf.net
Sailer, Brita	Minnesota State Representative, District 02B	577 State Office Building 100 Rev. Dr. Martin Luther King Jr. Blvd Saint Paul, Minnesota 55155	651-296-4265, 800- 920-5867	rep.brita.sailer@house.mn
Scheinoha, April	TRF Times Newspaper			april@trftimes.com
Severts, Chad	Minnesota Board of Water and Soil Resources	403 4th St NW Bemidji, MN 56601	218-333-8028 218-755-2671	Chad.Severts@state.mn.us
Sistad, Cheryl	Marshall/Beltrami SWCD	Box 16 Grygla, MN 56727	218-294-6144	Cheryl.Sistad@mn.nacdnet.net
Skoe, Rod	Minnesota State Senate, District 02	75 Rev. Dr. Martin Luther King Jr. Blvd. Capitol Building, Room 303 St. Paul, MN 55155-1608	651-296-4196	sen.rod.skoe@senate.mn
Stanley, Todd	Landowner, farmer	72552 Hwy 89 NW Grygla, MN 56727	218-689-1399 218-294-6309	tstanley@tvtel.com
Stanley, Trent	Landowner	30598 270th St NE MN 56725	Goodridge, 218-689-3192	mtstanley@gvtel.com
Steinhauer, Cliff & Marj			218-449-3791	
Stensing, Jerry	Beltrami SWCD Stewardship Forester	3217 Bemidji Ave N #3 Bemidji, MN 56601-4328	218-755-4339	jerry.stensing@mn.nacdnet.net
Stumpf, Leroy	Minnesota State Senate, District 01	75 Rev. Dr. Martin Luther King Jr. Blvd. Capitol Building, Room 208 St. Paul, MN 55155-1608	651-296-8660	
Thief River Falls Times Newspaper				trftimes@trftimes.com
Thompson, Dave	Landowner	36683 150th Ave NE Middle River, MN 56737	218-469-0949 218-222-3488	dtkt@wiktel.com
Thorstad, Danny	Marshall SWCD	PO Box 74 Warren, MN 56762	218-745-5010	Danny.Thorstad@mn.nacdnet.net
Tischer, Gary	TRF city resident	308 Tindolph Ave S River Falls, MN 56701	Thief 218-681-5256	gbtwild74@q.com
Torgerson, Les			218-689-5533	lescarol@gvtel.com
Vavricka, Mike	MPCA	714 Lake Ave Ste 220 Detroit Lakes 56501		michael.vavricka@state.mn.us
Vinje, Jason	MN DNR		218-846-8382	jason.vinje@state.mn.us
Voltz, Larry	Beltrami NRCS	Beltrami Soil and Water Conservation District 3217 Bemidji Ave North Suite #3 Bemidji, MN 56601	218-751-1942, ext. 3	larry.voltz@mn.usda.gov
Ziegler, Jim	MPCA	714 Lake Ave Ste 220 Detroit Lakes 56501	218-846-8102	james.ziegler@state.mn.us
Zutz, JoAnn	Cong. Collin Peterson	2603 Wheat Dr Lakes Falls, MN	Red 218-253-4356	joann.zutz@mail.housegov
Talmage, Phil	Area Fisheries Supervisor DNR	204 Main Street East Baudette, MN 56623	218-634-2522	phil.talmage@state.mn.us

Appendix B

Agency	Contact Person	Address	City	State	Zip	Phone	E-mail	Website
Minnesota Agricultural Water Resources Coalition	Warren Formo	3080 Eagandale Place	Eagan	MN	55121-2	651-768-2106		http://www.mawrc.org
American State Bank & Insurance of Grygla		102 S Main Ave	Grygla	MN	56727	218-294-6111		
MN DOT		410 S Marshall Ave	Grygla	MN	56727	218-294-6163		
Thief River Chamber of Commerce		2017 Highway 59 S	Thief River Falls	MN	56701			
Thief River Falls Convention & Visitors Bureau		2042 Hwy 1 W, PO Box 176	Thief River Falls	MN	56701	218-686-9785		
Corridor Enhancement Committee								ccl.design.umn.edu/publications/r/rcc/index.html
Eagles Club (Auxiliary)	Facebook	PO Box 401	Thief River Falls	MN	56701			
Fraternal Order of Eagles		305 Red Lake Boulevard	Thief River Falls	MN	56701	218-681-2406		
Jaycees	Ryan Petersburg					500-251-1996		
Kiwanis International Inc	Facebook	PO Box 144	Thief River Falls	MN	56701			
Knights of Columbus 4619		1604 Nottingham CT	Thief River Falls	MN	56701	218-681-2293		
Lions Club of Goodridge	Steve Kriel		Goodridge	MN	56725		skriel@wiktel.com	
Lions Club of Grygla	Brad Monson (President)	Po Box 226	Grygla	MN	56727	218-294-6349		
Lions Club of Thief River Falls	Charles Lundgren	PO Box 775	Thief River Falls	MN	56701	218-681-2117 (John Wollenzien)		
MN Women of Today		PO Box 112	Thief River Falls	MN	56701			
Noon Lions Club of Thief River Falls		1702 Little John Ct	Thief River Falls	MN	56701			
Rotary International of Thief River Falls	Emery Lee	PO Box 152	Thief River Falls	MN	56701	218-681-4478 (Emery Lee) or 218-681-6203 (Francisca Lee)		
Fraternal Order of Eagles 2368		405 Red Lake Blvd	Thief River Falls	MN	56701	218-681-2406		
Fourtown Grygla Sportsmans Club	Facebook	15925 120th Av NW	Thief River Falls	MN	56701	218-681-1849		http://www.fourtownsportsmans.com/
Pennington County Sportsmens Club	Brent Waale, James Counter	PO Box 232	Thief River Falls	MN	56701	218-681-1901		http://penn-co-sportsmens-club.freesevers.com/main.html
Key Club International		101 Knight Ave S	Thief River Falls	MN	56701			
Ottertail Power Co.		215 S Cascade St, PO Box 496	Fergus Falls	MN	56537		218-739-8200	
Red Lake Electric		412 Internatl Dr SW, PO Box 430	Red Lake Falls	MN	56750	218-253-2168	redlake@minnkota.com	
Arctic Cat		601 Brooks Ave So	TRF	MN	56701	218-681-8558		
Digi-Key Corporation		701 Brooks Ave So	TRF	MN	56701	218-681-6674		
Good-Vue Ayr Farms	Norma Hanson	Rural Goodridge	Goodridge	MN	56725	218-378-4380		
Northwest Beverage, Inc		1320 Greenwood St W	TRF	MN	56701	218-681-1735		
Sanford Medical Center/Hosp		120 Labree Ave S Ste A	Thief River Falls	MN	56701	218-681-4240		
Two Fools Vineyard		12501 240th Ave SE	Plummer	MN	56748	218-465-4655		
MN Extension	Art Nash Jr, Community Economics Educator	Extension Regional Ofc, 251 Own Hall, 2900 Univ Ave	Crookston	MN	56716	218-281-8689	artnash@umn.edu	
Dondelinger Foundation		212 Trinity Park Rd	Thief River Falls	MN	56701			
Peder Englestad Pioneer Village		825 Oakland Park Rd, PO Box 127	TRF	MN	56701	218-681-5767	pchstrf@mncable.net	
Goodridge Area Historical Society		21625 330th Ave NE	Goodridge	MN	56725			
City of Goodridge		305 E Vaughan Main St	Goodridge	MN	56725	218-378-4113		
City of Grygla		219 W Beltrami St, PO Box 76	Grygla	MN	56727	218-294-6292	cityofgrygla@gvtel.com	
TRF - Community Development Director						218-681-2500		
Grygla Eagle		127 N Main Ave	Grygla	MN	56727	218-294-6220		
The Times		324 Main Ave N	TRF	MN	56701	218-681-4450	www.trftimes.com	
TRFRadio							http://www.trfradio.com/	
Fourtown Grygla Sportsmens Club	Gregory Harris					218-681-1849		
Fourtown Snowmobile Club	Jack Nelson	15925 120th Ave NW	Thief River Falls	MN	56701			
Goodridge Area Community Center			Goodridge	MN	56725	218-378-4521		
Goodridge Trail Blazers			Goodridge	MN	56725	218-378-4588		
Greenwood Park & Rec Area(trails, environm learing lab, xcuntry ski)		Greenwood St	TRF	MN	56701	218-681-2519		
Pine to Prairie Birding Trail - info avail at	TRF Chamber of Comm	2017 Hwy 59 SE	TRF	MN	56701			
Thief River Falls Snow Drifters		1023 Atlantic Ave N, PO Box 51	TRF	MN	56737	218-689-0280		
Thief River Golf Club		13697 188th St NE	TRF	MN	56701	218-681-2955		
Grygla Public Schools								http://www.grygla.k12.mn.us/
Northland Technical and Community College		1101 Hwy 1 E	TRF	MN	56701	218-681-0701		
St. Bernard's Catholic School		117 Knight Ave N	TRF	MN	56701	218-681-1539		
St. John's Lutheran School		15671 158th St NE	TRF	MN	56701	218-681-7753		
Thief River Public Schools		230 LaBree Ave S	TRF	MN	56701	218-681-8711		
Beltrami SWCD	Bill Patnaude					218-333-4158	http://www.beltramiswcd.org/	
Marshall County SWCD	Lisa Newton					218-745-5010	http://www.nwmnswcd.org	
Pennington SWCD	Bryan Malone					218-683-7075	http://www.nwmnswcd.org	
Garden Valley Telephone Company		201 Ross Ave	Erskine	MN	56535	800-448-8260	gvtc@gvtel.com	
DNR Forestry		239 Park Dr E	Grygla	MN	56727	218-294-6115		
Ducks Unlimited	Terry Yanish	105 1st Ave	Alvarado	MN	56710			
Agassiz National Wildlife Refuge		22996 290th St NE	Middle River	MN	56737	218-449-4115	agassiz@fws.gov	
Beltrami Island State Forest	MN DNR Division of Forestry	500 Lafayette Road	St. Paul	MN	55155	651-296-6157		